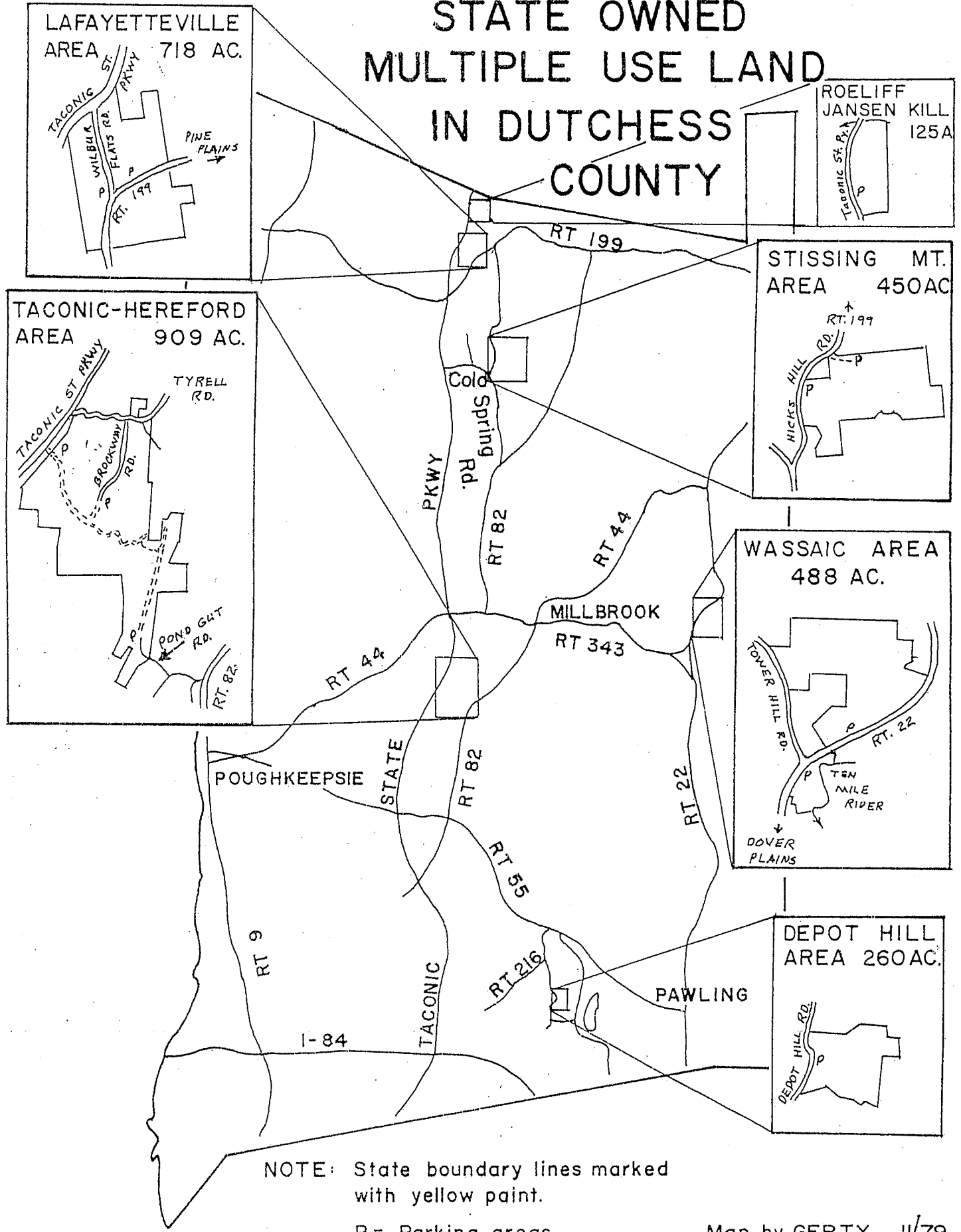


STATE OWNED MULTIPLE USE LAND IN DUTCHESS COUNTY



NOTE: State boundary lines marked with yellow paint.

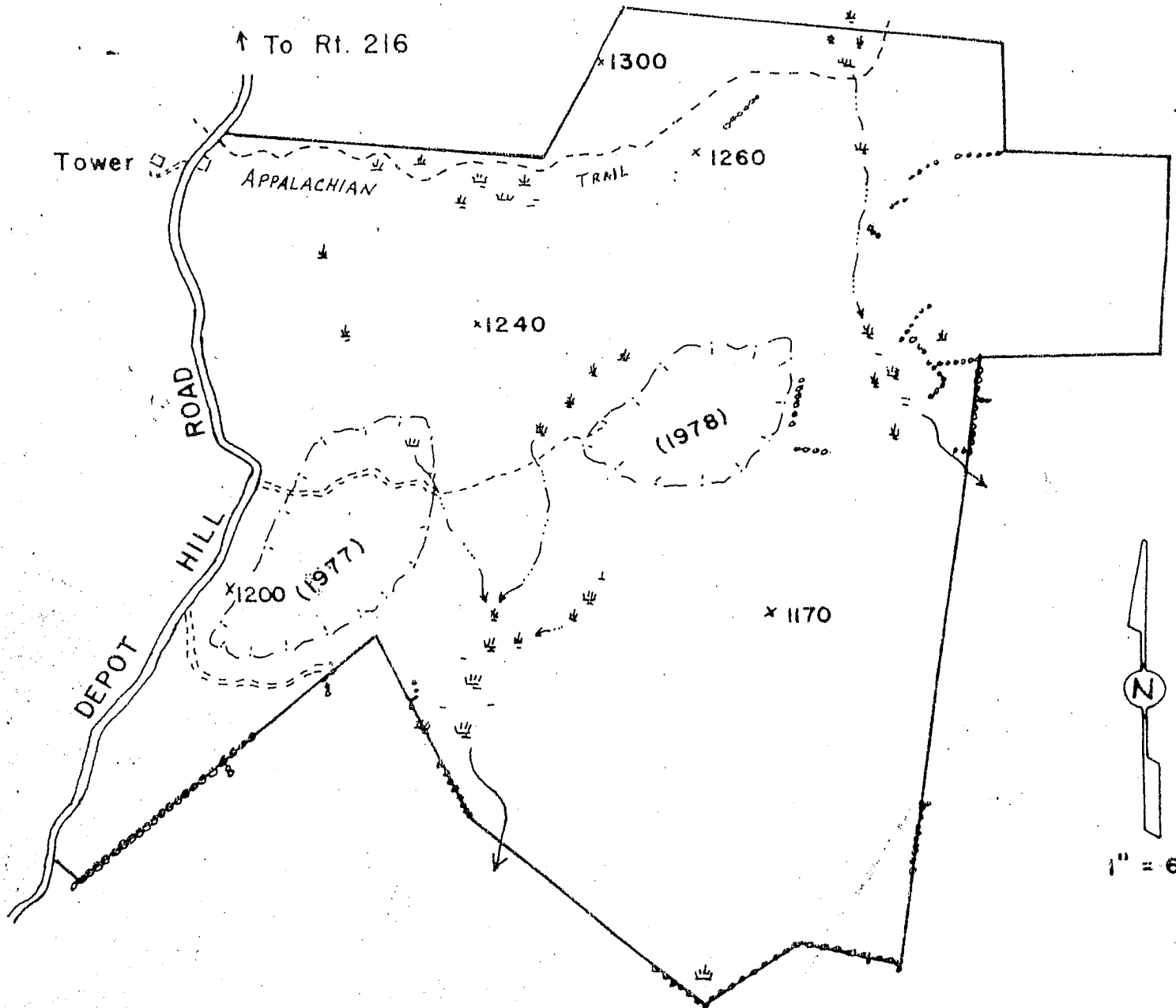
P = Parking areas

Map by GERTY 11/79
4/83

DEPOT HILL MULTIPLE USE AREA

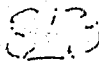
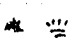
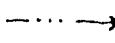

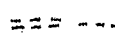

260 Acs.

Dutchess County



1" = 660'

KEY:

-  Fire damaged areas (date)
-  Wet areas
-  Streams
-  Stone walls
-  Trails
-  Hilltop elevations

Map by GERTY

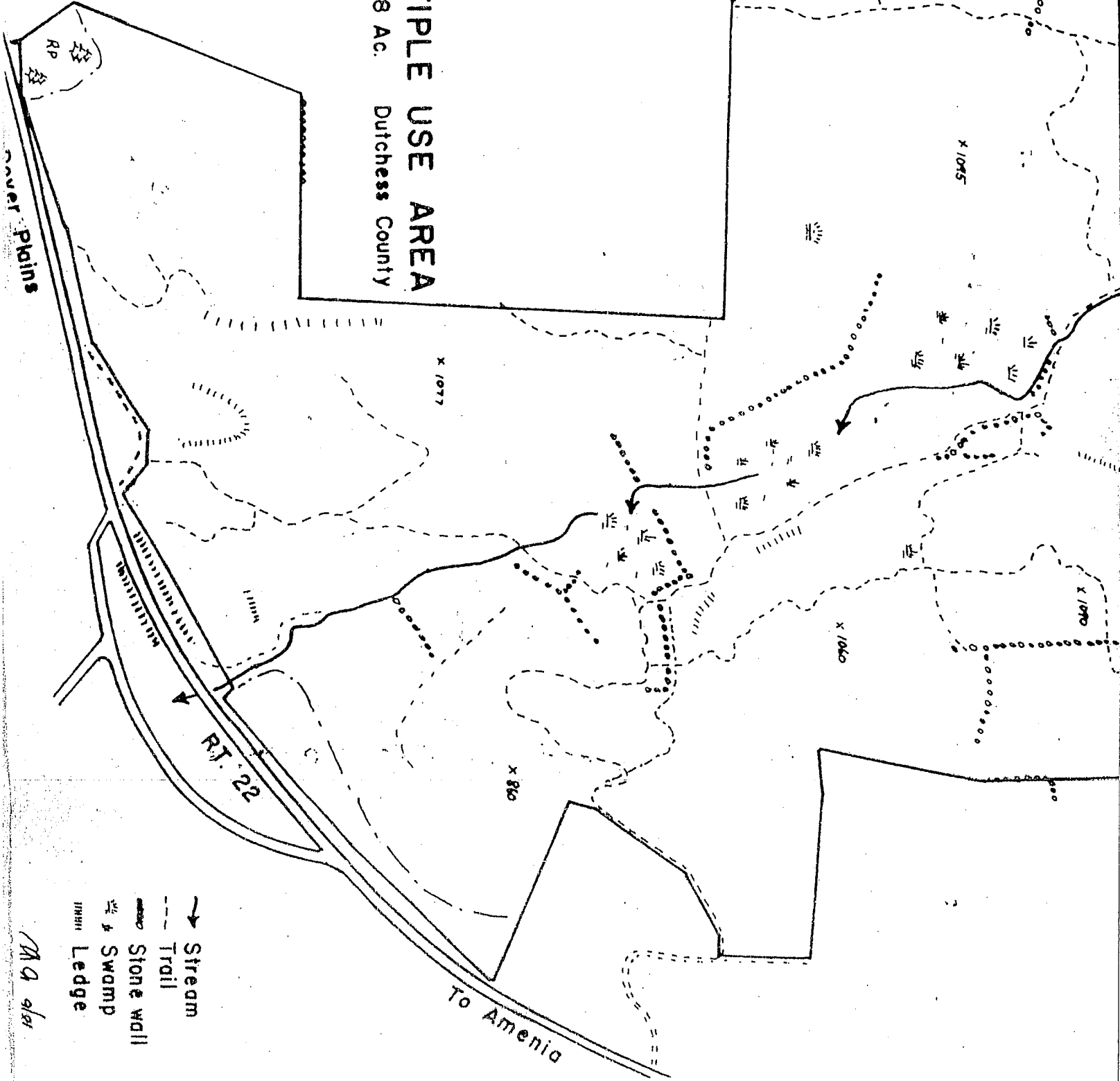
979 10/81

Tower Hill Rd.

WASSAIC MULTIPLE USE AREA

St. For. Dut. 5 488 Ac. Dutchess County

1" = 660'

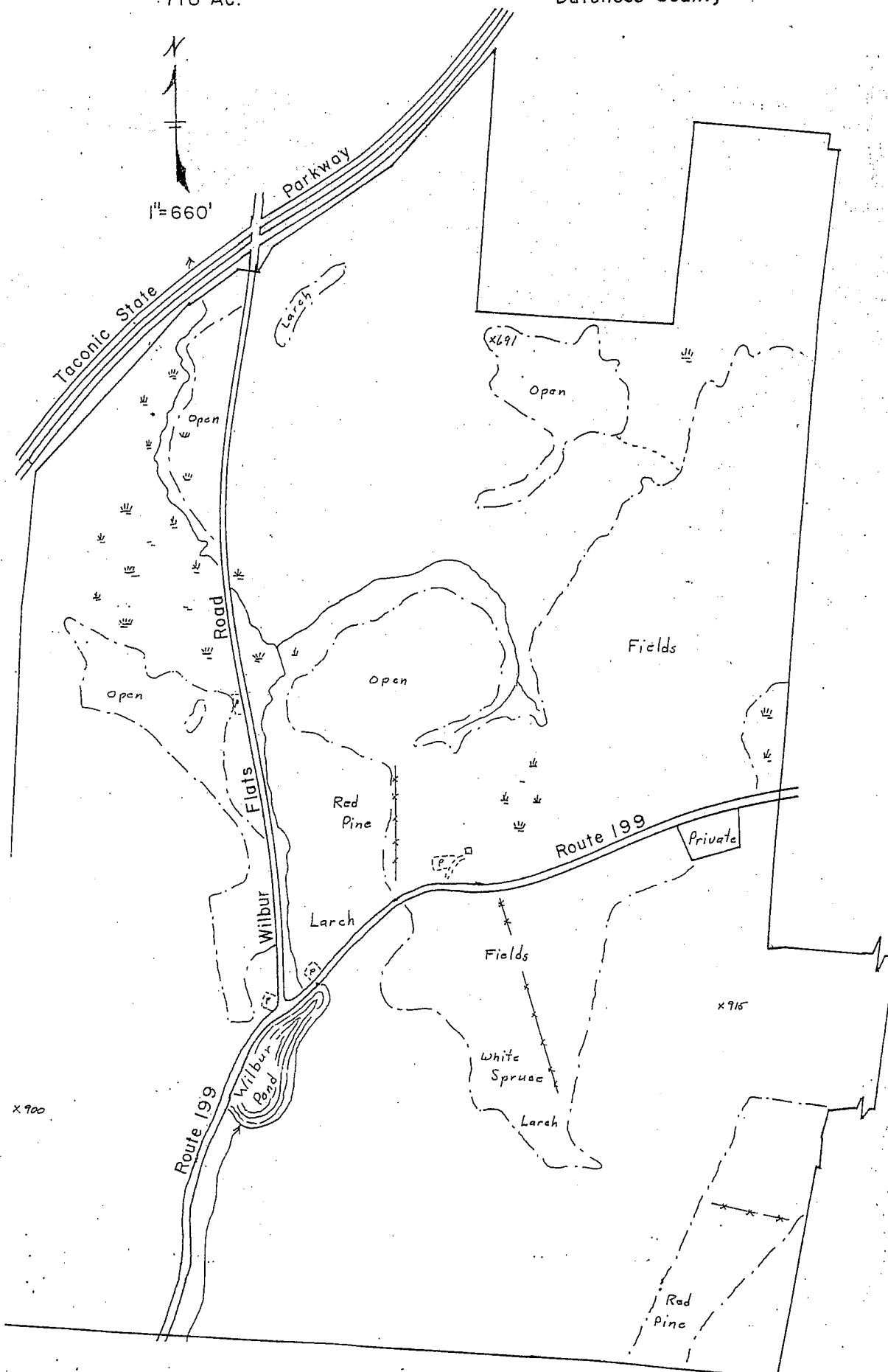


MA 9/87

LAFAYETTEVILLE MULTIPLE USE AREA

718 Ac.

Dutchess County



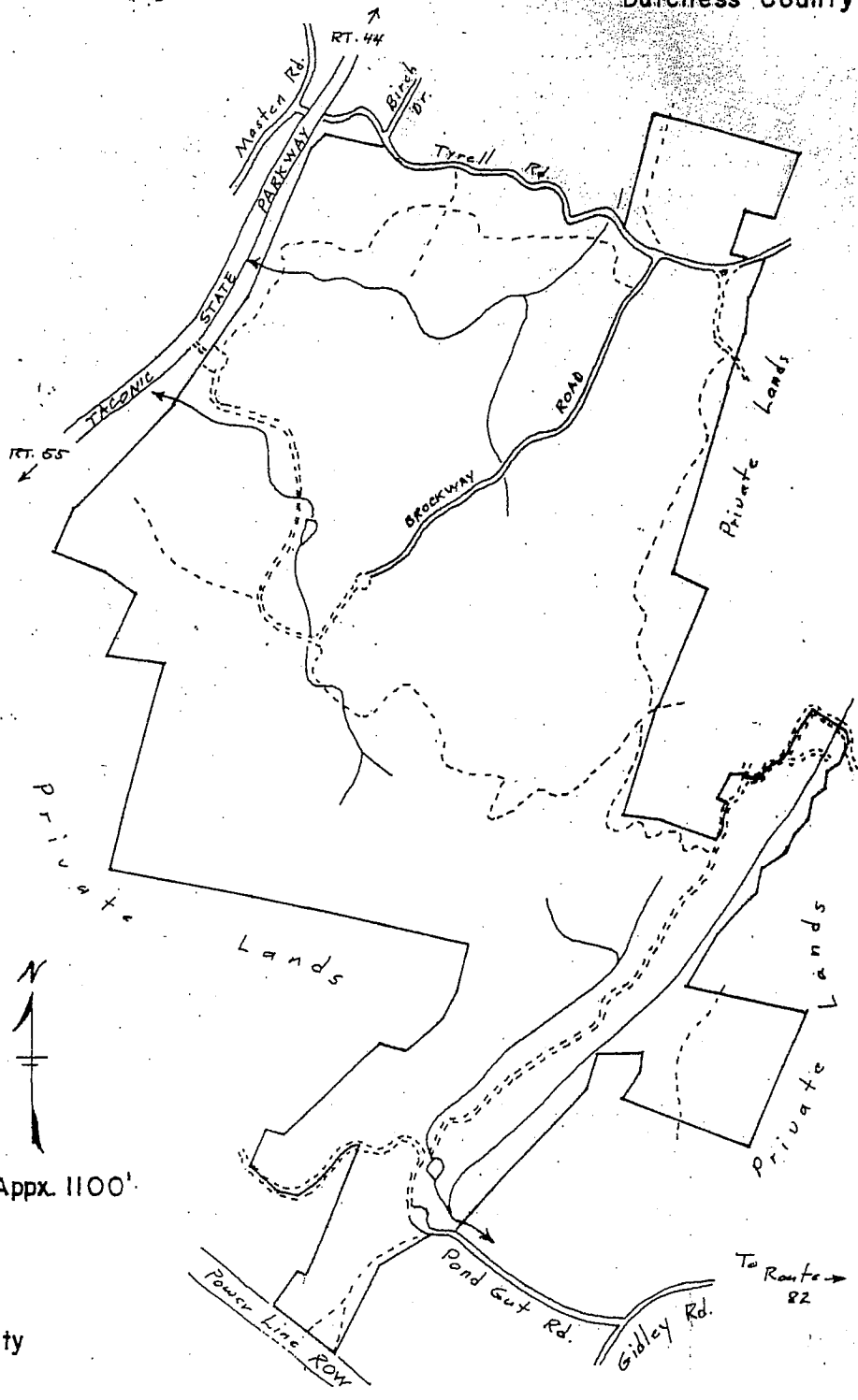
Map by Gerty

10/79

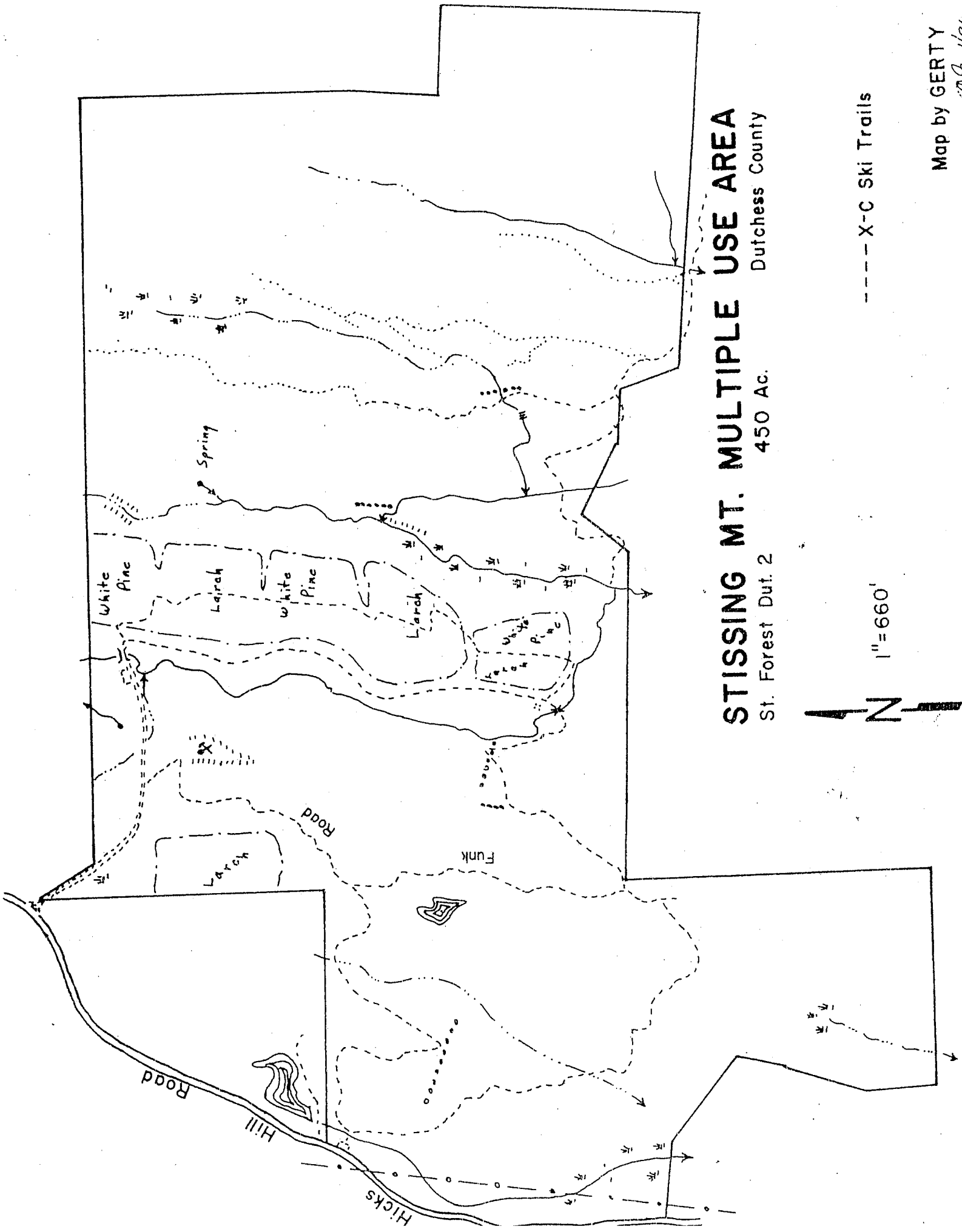
TACONIC-HEREFORD MULTIPLE USE AREA

909 Acres

Dutchess County

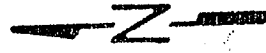


by Gerty
10/79



STISSING MT. MULTIPLE USE AREA

St. Forest Dut. 2 450 Ac. Dutchess County



1" = 660'

----- X-C Ski Trails

Map by GERTY
2/28/81

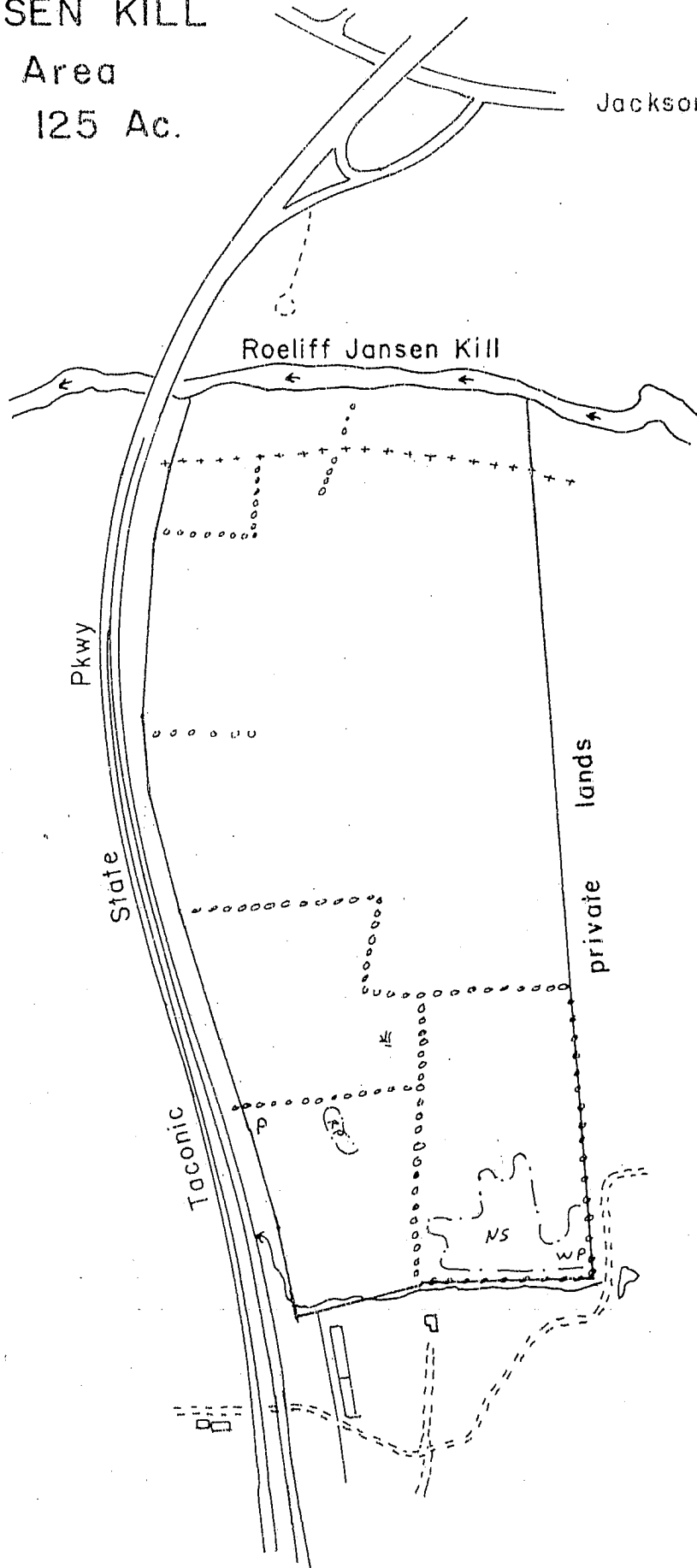
ROELIFF JANSEN KILL

Multiple Use Area

T-Dut. 31

125 Ac.

Jackson Corners Rd.



1" = 660'

Key:

- oooo Stone walls
- Plantations
- ++++ Old railroad grade
- P Parking

12/82 *[Signature]*